



**President**

Bill Cox  
bill@qswtools.com

**Vice President**

Syd Emmons  
sydmargo@aol.com

**Secretary**

Margaret Potvin  
hpotvin@earthlink.net

**Webmaster**

Bill Cox

**Treasurer**

Karen Thompson  
RagTopDay2003@gmail.com

**Member at Large**

Nikci Loth  
rheanl@hotmail.com

**Newsletter**

Howard Potvin  
hpotvin@earthlink.net

**Phoenix Cruiser Travel Club**  
www.phoenixcruisertravelclub.org.

## CRUISING WITH PHOENIX

### 2018 Motor Home Shows

Phoenix USA, Inc. will have representatives Earl Robbins and Kyle Herschberger on hand at the Tampa RV Supershow along with several 2018 Phoenix Cruiser Models. The show runs from Wednesday January 17- Sunday January 21 at the Florida State Fairgrounds in Tampa, FL. Your \$10 admission includes second day admittance privileges for free and there is a \$1 discount for Senior Citizens on Wednesday.

***New this year Earl is inviting Phoenix Cruiser owners to a hosted meet and greet in the display on Thursday from 4-6 PM.*** The Phoenix USA display will be in location #580 – on the main Midway (Southern most display road) at the corner of Lake Road.

Show Information: <http://www.frvta.org/show/florida-rv-supershow/>

Show Map: <http://www.frvta.org/wp-content/uploads/2018-publish-for-web-4.pdf>

**If you are interested in seeing a Phoenix Cruiser motorhome in Florida but will not be attending the Tampa Supershow, please contact Earl Robbins at (877) 754-8535 or e-mail [earl@phoenixcruiser.com](mailto:earl@phoenixcruiser.com) to arrange a private showing.**

~~~~~  
Earl and Kyle are also looking forward to the 97<sup>th</sup> **FMCA** International Convention and Expo in Perry, GA running from March 15-18. Five nights of camping (with over 3,000 other motorhomes) and 4 days of events, displays, seminars and entertainment are included with the \$195 rally fee. Phoenix will have three new models on display at the event.

***The official coach preview day is March 15 from 1-5 PM and Phoenix welcomes current owners to stop by and say hello!***

FMCA Rally Details: <https://www.fmca.com/conventions-64/perry-ga-2018.html>

Kind regards,

Kyle Herschberger  
~~~~~

### JUST ASKING – February Issue

***Tell us about your favorite campground/RV park/your happy place. It could be a spot you return to time and time again or a one-time experience you just can't get out of your head. Please add a short description of the park and/or the surrounding area to let us know why you love this destination. Include a picture if you'd like.***

No need to limit yourself to one spot (I have at least 3 in mind). Please e-mail your response to [RagTopDay2003@gmail.com](mailto:RagTopDay2003@gmail.com) by Friday, February 2<sup>nd</sup>. If you wish to remain anonymous, please let us know. Otherwise, please include your name, city and state. Looking forward to hearing from you!

Hi there –

We just rejoined the travel club after a few years absence so received the recent newsletters. We were happy to see some coverage of caravan travel. We have traveled with Adventure Caravans many times and noticed the mention of their new 51 day trip to Newfoundland. We took that trip this year. It was absolutely wonderful!!! We had been to NL twice before as a part of Atlantic Provinces caravans, but having so much time in such a great place was fabulous!! In fact, we made a presentation about our trip at the Osher Lifelong Learning Institute at Bradley University in October. Our presentation got a very positive response. We are planning to attend the reunion at Duluth so could present it to those attending if it would be of interest to the group.

**Jim and Rae Anne Hamp  
Peoria, IL**

P.S. We also have a lengthy travel log we wrote during the NL trip which we could forward to anyone wanting to read it.

We forgot to mention that besides everything else cool about the place, the culture of NL is fascinating because of the varied ancestries of the residents. And their version of English is charming!! You should definitely travel there – you would love it!!! The Adventure Caravans 51 day trip was planned by our wagon master friends, the Kleins, and they were our wagon masters. Future trips will have others leading and there will no doubt be some minor changes, but it will still be great because NL is great!!!!

~~~~~  
**CHECK YOUR PASSPORT.**

Note the expiration date. Some countries require your passport to be valid at least six months beyond your trip. Have four blank pages for entry/exit stamps and visas? If not you may need a new passport.

**WELCOME NEW MEMBERS**

**Richard and Pamela Bradley**, Mount Pleasant, Pennsylvania, new owners of 2018 Phoenix Cruiser 2100

**Kenneth and Gloria Bryant**, Gold Canyon, Arizona, new owners of a 2018 Phoenix Cruiser 2552

**Tom and Colette Buehler**, Chicago, Illinois, new owners of a 2017 Phoenix Cruiser 2350

**John and Maria Giese**, Santa Maria, California, new owners of a 2018 Phoenix Cruiser 2552

**Sharon Hamilton and Suzanne Gordon**, The Villages, Florida, new owners of a 2018 Phoenix Cruiser 3100

**Thomas J. Hall, III**, Laguna Woods, California, owner of a 1996 Dodge Holiday made by InterVec. Thomas is a Doctor of Chiropractic Medicine. He has two sons who are great kids. He is hoping to find someone in the club with a Holiday Owner's Manual.

**James and RaeAnne Hamp**, Peoria, Illinois, owners of a 2013 Phoenix Cruiser 3100 James is a retired maintenance electrician and his hobbies include ham radio, computers, photography, and travel. RaeAnne is a retired teacher whose hobbies are clogging, walking, reading books, and travel.

**Richard Hoover**, Narvon, Pennsylvania, new owner of a 2018 Phoenix Cruiser 2350

**Carl and JoAnn Phillips**, Ruskin, Florida, new owners of a 2018 Phoenix Cruiser 2552

**Paul and Joan Sherman**, Pembroke, Massachusetts, new owners of a 2017 Phoenix Cruiser 2910

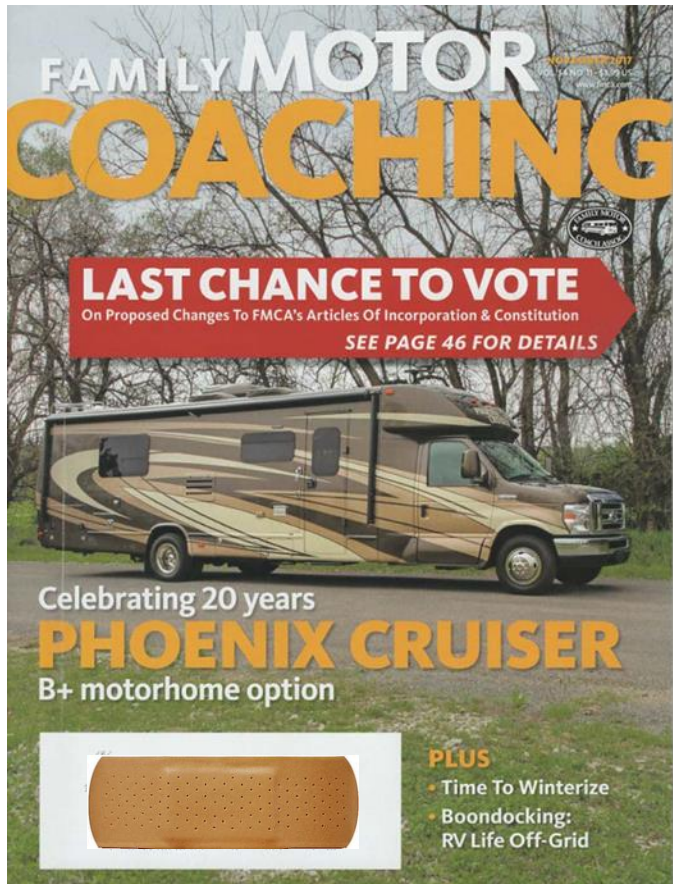
**James and Laura Snider**, Montgomery, Texas, new owner of 2018 Phoenix Cruiser 2552

**James and Mary Anne VanderVoord**, Seymour, Tennessee, new owners of a 2018 Phoenix Cruiser 2552

**Arthur and Patricia Winkelman**, Duluth, Minnesota, new owners of a 2018 Phoenix Cruiser 2350

## 20<sup>th</sup> Anniversary Feature Article

Phoenix Cruiser has been featured on the cover of the November issue of the Family Motor Coaching Magazine as well as the inside of the back cover. Also inside is a five page article touting its construction, exterior, interior, utilities as well as the author's final impressions.



Phoenix USA is celebrating its 20<sup>th</sup> anniversary in 2017. The Elkhart, Indiana, manufacturer, which sells factory direct, has established a favorable reputation among owners who are looking to downsize from a larger RV, but don't want to go too small. Company employees place considerable pride in producing motorhomes to high quality standards, paying attention to the details and striving for innovation in every area.

The factory-direct relationship enables the company to add custom features upon buyer request, in addition to the usual options. Most Phoenix Cruiser floor plans can be built on a Mercedes-Benz Sprinter diesel powered chassis or a Ford E-Series gasoline powered chassis.

## Club Internet Sites

The club website is:

<http://phoenixcruisertravelclub.org>

There is no forum there, just newsletters and other information. The login to the private area is your email and the password is: "On the road again." (Exactly as shown with the capital O, spaces and the period.)

The official Phoenix website is:

[www.phoenixusarv.com](http://www.phoenixusarv.com)

Look on the left and click 'forum' to get to that area. If you already have a user name go ahead and login, otherwise you will need to select a unique user name, which can take a few days until you are approved. If you apply for acceptance there and it takes more than a week, email me directly and I will try to assist.

### Online activity in November:

November was an active month on the Phoenix Cruiser forum. If you do not follow the forum on a regular basis here are a few highlights:

<http://www.phoenixusarv.com/community/index.php/topic,2978.0.html>, A discussion on retrofitting LED lights in an older coach.

<http://www.phoenixusarv.com/community/index.php/topic,2981.0.html>, Replacing shocks on the E-450.

<http://www.phoenixusarv.com/community/index.php/topic,2989.0.html>, Discussion of options to get your new coach home from the factory.

<http://www.phoenixusarv.com/community/index.php/topic,2987.0.html>, Towing a Honda CR-V and the battery keeps going dead.

<http://www.phoenixusarv.com/community/index.php/topic,2985.0.html>, Do you have a shelf above the bed?

And do not forget to check in and join the Phoenix Cruiser Facebook group:

<https://www.facebook.com/groups/322506454518168/> It is a closed group so you have to ask an admin to join.

**John A. Trax**

[www.zigzagmtart.com](http://www.zigzagmtart.com)

***There are many alternatives to staying in expensive campgrounds when traveling. Listed here are some of them.***

### **Bureau of Land Management (BLM)**

BLM Land is mostly found out west, and dispersed camping is allowed on most BLM land for up to 14 days. Unfortunately the BLM doesn't have a comprehensive map on their website showing where all of the free BLM campsites are, but you can get a feel for what is available in your region by browsing their regional maps. Some states have pretty handy guides and you also contact the local BLM office to get more info on where you can camp for free.

### **United States Forestry Land (USFS)**

Similar to BLM lands, dispersed camping is allowed in over 175 national forests and grasslands in the United States. For information on camping on USFS locations across the country you have to check with each ranger district directly. On the USFS website you can search by state and select a specific forest or grassland to learn more about.

### **Parking Lots**

Not necessarily what you had in mind, but if you find yourself caught in town "refueling" on supplies it's important to note that Walmart, Camping World, Cracker Barrel, casinos and truck stops often provide areas for free overnight parking. When staying in these types of parking lots, you may have to stay inside your vehicle for the evening, but if you're in a bind, it can be a good option. Some truck stops even offer laundry services and coin operated showers. Make sure to check with management if you are unsure or have any questions—not all locations in all states allow overnight parking. For casinos with overnight parking, check on [casinocamper.com](http://casinocamper.com) to see which casinos allow overnight parking.

**All Stays Camp & RV** is an app that you download to your phone or iPad for finding free campsites.

**Ultimatecampgrounds.com** is an awesome website and app that lists all public campgrounds in the US, as well as Canada. You can filter for any type of campground including type, pricing and/or free. When you select a site you'll be given the GPS coordinates, elevation and the local weather. It also has a trip planning option that will allow you to create a route using free dispersed camping options.

## **SAVE THE DATE!**



Suzanne Salter, organizer of our **WEST COAST EVENT**, asks that you save the dates of April 15 to 18, 2018 (leave on the 19<sup>th</sup>) for our annual event at the Pismo Coast

Village RV Resort, Pismo Beach, California. This is an unofficial event as far as the Phoenix Cruiser RV Travel Club goes, and some of us invite our non-member friends along. We will have the usual cinnamon bun breakfast one morning, a catered dinner one evening, and a trip to the local melodrama on another. This is a beautiful spot on the west coast, and we always enjoy our visits together. More information will be in the next bulletin. We will each make our own reservations. If you'd like to reserve early, call the Pismo Coast Village RV Resort and ask to be placed near the **SALTER** group.

Total cost for the Resort is \$232.96. There will be additional costs for catered dinner, club house and cinnabuns. Phone numbers for reservations are: 1-888-RV-Beach or 1-805-773-1811.

## **SAVE THE DATE!**

The 2018 Phoenix Cruiser Travel Club reunion will be held in **Duluth, Minnesota**, at the **Buffalo Valley Campground**, from Thursday, **September 6<sup>th</sup>**, through Tuesday, **September 11<sup>th</sup>, 2018**. Additional information to be included in upcoming newsletters. Hope to see you there!!!



## LET'S TAKE A LOOK AT MINNESOTA



Since we are heading for Duluth, Minnesota for our annual reunion in September this year, I thought I would begin to

explore the area by looking at WHAT MAKES MN UNIQUE?

- There are **90 county fairs** in Minnesota between June and September. One could certainly find something just before or just after our reunion.
- **Juicy Lucy** is an iconic Minnesota burger served in many ways all over the state, but always a juicy burger patty with molten cheese in the middle
- **“Minnesota Nice,”** is the stereotypical behavior you can expect from natives. This might be smiles on the street, courteous, reserved, and family-centered, and mild-mannered behaviors in general.
- **Butter Coffee** has been made by Minnesota housewives forever but developers of a new Bulletproof Coffee maintain it can cure disease.
- Minnesota is known as the **“Land of 10,000 Lakes.”** There are actually 11,842 but who’s counting?
- **Mall of America** is the nation’s largest shopping center. It has over 500 stores, 50 restaurants, Sea Life Minnesota Aquarium plus theaters and adventure golf. Located in Bloomington, MN fifteen minutes from Minneapolis.

## MADE IN MINNESOTA

- Anyone who wears boots has certainly heard of **Red Wing Shoes**. For the past 110 years

these sturdy boots have been prized by workers around the world.

- When the first can of **Spam** came off the production line in 1937, “the world was changed forever,” according to the Spam Museum in Austin, MN, south of Minneapolis.
- **General Mills** is a leading global food company that markets many well-known American brands such as Betty Crocker. You can tour their Betty Crocker test kitchens.
- The **Duluth Pack** company is a manufacturer of special kinds of traditional portage packs used during canoe travel. They make other kinds of high-quality canvas and leather goods.

## WHAT’S THE FALL WEATHER LIKE THERE?

The average daily temperatures in Northeastern Minnesota, around Duluth, are 65 degrees high and 46 degrees low.

Although winter weather can be bitterly cold, September is actually one of the most comfortable months in terms of weather, during which time the daytime temperatures stay around the lower seventies. We may have some rainy days and cold nights. We may see some colorful leaves, especially as the month progresses. You can go to [www.mndr.gov/fallcolors](http://www.mndr.gov/fallcolors) to locate a fall color finder.



**InterVec Phoenix Travel Club  
Cash Flow Statement  
Fiscal Year Ending 12/31/2017**

|                                                       |                            |                            |
|-------------------------------------------------------|----------------------------|----------------------------|
| Fifth/Third <b>Savings Account</b> Balance 1/1/2017   | \$ 26,012.50               |                            |
| Fifth/Third <b>Checking Account</b> Balance 1/1/2017  | <u>1,288.20</u>            |                            |
| <b>Beginning Cash Balance..01/01/2017</b>             |                            | <b>\$ 27,300.70</b>        |
| <b>Inflows – Fiscal Year 2017</b>                     |                            |                            |
| Dues – 2017                                           | \$ 1,485.00                |                            |
| New Member Factory Rebates – 2017                     | 160.00                     |                            |
| Interest Income                                       | 4.67                       |                            |
| Reunion Fee – 2017                                    | 8,307.00                   |                            |
| Silent Auction – 2016                                 | <u>45.00</u>               |                            |
| <b>Total Inflows – 2017</b>                           |                            | <b>\$ 10,001.67</b>        |
| <b>Outflows – Fiscal Year 2017</b>                    |                            |                            |
| Operating Expenses                                    |                            |                            |
| Liability Insurance                                   | \$ 1,233.00                |                            |
| Bank Fee—Stop Payment                                 | 33.00                      |                            |
| Office Supplies—Snail Mail                            | 20.00                      |                            |
| Postage                                               | 29.40                      |                            |
| Website Hosting Fee                                   | <u>252.50</u>              |                            |
| Total Operating Expenses                              | \$ 1,567.90                |                            |
| Reunion Expenses – 2017                               |                            |                            |
| Catered Meals – Breakfast                             | \$ 2,017.00                |                            |
| Club Sponsored Meals (Cookout & Ice Cream Social)     | 433.23                     |                            |
| Bingo Gifts                                           | 294.67                     |                            |
| Coffee Mugs                                           | 423.33                     |                            |
| Campground Fees – Bend/ Sisters Garden RV Park        | 5,350.85                   |                            |
| Theater Tickets                                       | <u>713.40</u>              |                            |
| Total Reunion Expenses                                | \$ 9,232.48                |                            |
| <b>Total Outflows – 2017</b>                          | <b><u>\$ 10,800.38</u></b> |                            |
| <b>Overall Cash Flow Year-to-Date</b>                 | <b><u>\$ (798.71)</u></b>  |                            |
| Fifth/Third <b>Savings Account</b> Balance 12/6/2017  | \$2 4,017.17               |                            |
| Fifth/Third <b>Checking Account</b> Balance 12/6/2017 | <u>\$ 2,484.82</u>         |                            |
| <b>Ending Cash Balance 12/06/2017</b>                 |                            | <b><u>\$ 26,501.99</u></b> |

## ***Just Asking***

**Question posed in the October 2017 issue:**

***The new management at Phoenix USA is curious to know what features/ improvements owners would like to see in future PC models. Please include your wish list for a future rig and/or things you would have done differently on your current rig.***

### **Member Responses**

Two suggestions –

1. Different door latches
2. Extend the bathroom sink counter in the 2350/2400 towards the shower

*Jack Doub, Millsboro, Delaware, 2015 Phoenix Cruiser 2350*

I'd like to offer a couple of suggestions, things that I've already modified in my rig.

1. AC outlets on the wall next to the beds, since a lot of people use their electronic devices while in bed.
2. There is an outlet under the rear dinette (3100 model) which is impossible to get to unless you're my 3 year old granddaughter. Why not put it on the outside of the seat.
3. The table should be able to be removed easily to convert to a small bed. I've done this—not so hard.
4. The heat does not circulate evenly. The bed area is warm, while the rest of the coach is not getting enough. Just one vent under the galley sink, and this one has a weak flow.

*Gabe Palmer, Shelton, Connecticut, 2012 Phoenix Cruiser 3100*

Factory installed solar panels

*Steve Bowser, Mt. Juliet, Tennessee, 2015 Phoenix Cruiser 2552*

One feature that I would like to see addressed is the overflow for the fresh water. What now happens is that the overflow runs down the side of the RV and leaves hard water stains on the finish. An easy fix would be to run a tube down the backside of the outer skin and have the overflow drain on the ground under the RV, keeping the finish nice and clean.

*Bill Sistek, Reno, Nevada, 2017 Phoenix Cruiser 2552*

We would like more efficient heat distribution. Heat is not adequate for the front of the coach and too hot in the bathroom. We love our PC and for the most part are pleased with everything else.

*Chuck and Sue Parkins, Warwick, Rhode Island, 2016 Phoenix Cruiser 2552*

My suggestion for a change would be in the area of interior lighting. The current LED fixtures are not dimmable and sometimes are too bright. But since there are two bulbs in the fixture maybe it is possible to have a three-position switch, center off, left for full on and right for only one bulb on. Another thing I have seen is dim LED foot lights. These are put in the cabinet toe space and are adjustable for brightness. It is a very neat effect and gives a good night light in the coach when very dim or helps with over all brightness when turned up. On some I have seen you can even adjust the color, not sure I'm I am a fan of that but it might be a cool thing at RV shows.

*John Trax, Zigzag, Oregon, 2017 Phoenix Cruiser 2552*

My must haves on my next 3100 Phoenix Cruiser include:

1. Ducted Air Conditioning
2. Eliminating the pantry cabinet to gain another 8" to 12" inches of counter space.
3. Extra furnace vent in the Lounge/Kitchen area
4. Add several combo electrical outlet/USB plug-ins.
5. Outdoor speakers (attached to DVD system) to listen to music outdoors.
6. Outdoor Entertainment Center with TV and DVD Player, if possible (or at least an outside TV jack with an easy-to-remove TV for bedroom area).
7. Plus all of the suggestions of the others listed above!!!!

*Karen Thompson, Muskegon, Michigan, 2012 Phoenix Cruiser 3100*



**Karen Thompson, Treasurer  
2743 Henry Street, PMB 128  
Muskegon, MI 49441**

**2018 Membership Registration**

**Membership Registration dues are waived for this year, 2018, (except for \$10.00 snail mail dues.)**

**Please complete this form if you are a new member or if you have changed any of your information so we can maintain up-to-date contact information for you. Check here if you require snail mail (yes or no) \_\_\_\_\_**

**Please send this completed form and check for \$10 snail mail dues payable to Phoenix Cruiser Travel Club.  
Mail to: Karen Thompson, 2743 Henry Street PMB 128, Muskegon, MI 49441**

Name \_\_\_\_\_

Street Address \_\_\_\_\_

City \_\_\_\_\_ State \_\_\_\_\_ Zip Code \_\_\_\_\_

Alternate Address \_\_\_\_\_

City \_\_\_\_\_ State \_\_\_\_\_ Zip Code \_\_\_\_\_

Approximate dates of alternate address \_\_\_\_\_

Phone Numbers (Home) \_\_\_\_\_ (Cell) \_\_\_\_\_

E-Mail Address \_\_\_\_\_

RV Brand \_\_\_\_\_ Year \_\_\_\_\_ Model \_\_\_\_\_

Stopping Place – It has been the practice of some club members to offer stopping places for other members. This would mean you are offering a place for fellow members to stay for one night without providing anything other than a spot to park. We will put this list out in the next newsletter. Members will be required to contact you before stopping. The newsletter will only include your city and e-mail address so you can be contacted.

Are you willing to provide this service? \_\_\_\_\_

How did you learn about the InterVec-Phoenix Travel Club? \_\_\_\_\_

If a member recommended the club to you, what is his or her name? \_\_\_\_\_

On the reverse side of this form, tell us something about yourself. For example, what kind of work do you do or are you retired? Children? Hobbies? Volunteer activities? Special interests? Unique Campgrounds? Pets? Etc. If you wish, send us a photograph. We would like to know a bit about you and if you send a picture, space permitting, we will use it in our newsletter.

Please include any ideas for future September Reunion/Rally sites on the back of your form. Upcoming rallies will be held in 2018 in Central Standard Time Zone, 2019 in Eastern Standard Time Zone, and 2020 in Mountain/Pacific Standard Time Zone.